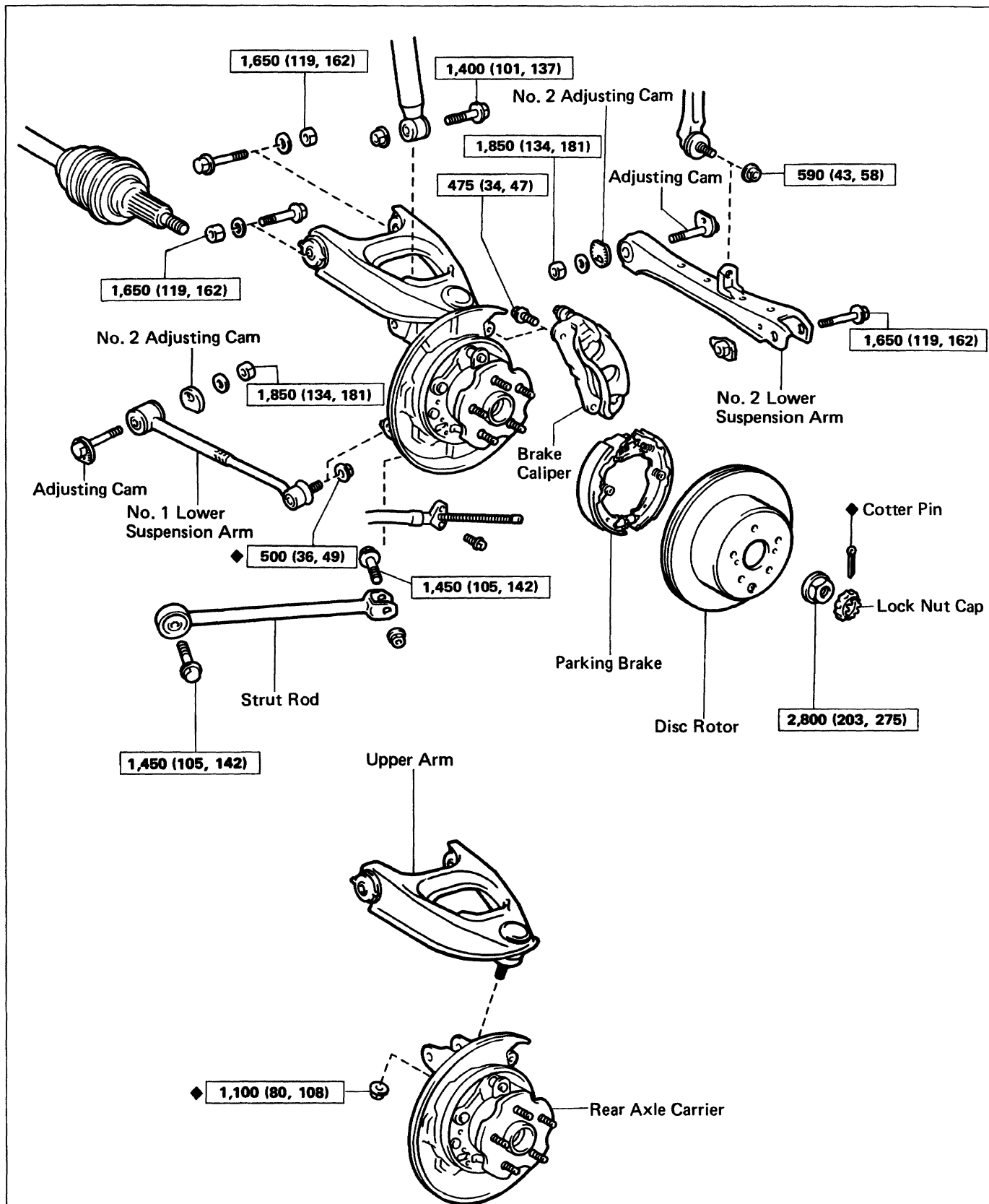
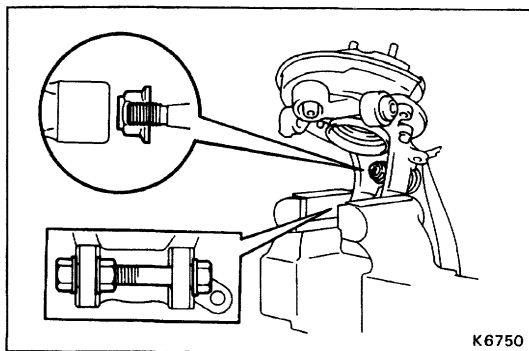


# Upper Arm COMPONENTS



kg-cm (ft-lb, N·m) : Specified torque

◆ Non-reusable part



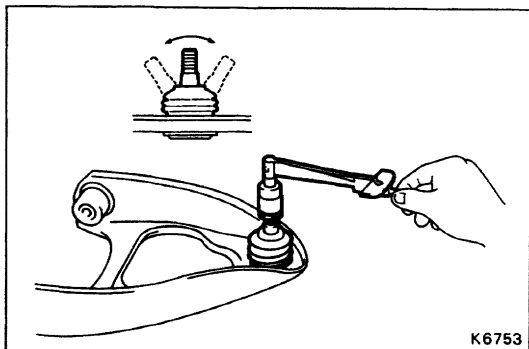
## REMOVAL OF REAR AXLE CARRIER WITH UPPER ARM

(See page [SA-34](#))

### REMOVAL OF UPPER ARM

#### REMOVE UPPER ARM FROM AXLE CARRIER

- Install a bolt and two nuts to the axle carrier and secure it in a vise.
- Loosen the nut to the position shown in the illustration. Then tap the nut with a hammer and remove the upper arm.



## INSPECTION OF UPPER ARM BALL JOINT

#### INSPECT BALL JOINT FOR ROTATION CONDITION

- Flip the ball joint stud back and forth 5 times as shown in the figure, before installing the nut.
- Using a torque gauge, turn the nut continuously one turn each 2 - 4 seconds and take the torque reading on the fifth turn.

**Torque (turning): 10 - 35 kg-cm**

**(9 - 30 in.-lb, 1.0 - 3.4 N-m)**

If not within specification, replace the upper arm.

## INSTALLATION OF UPPER ARM

#### INSTALL UPPER ARM TO AXLE CARRIER

- Install a bolt and two nuts to the axle carrier and secure it in a vise.
- Install the upper arm to the axle carrier.
- Install a new nut.

**Torque: 1,100 kg-cm (80 ft-lb, 108 N-m)**

## INSTALLATION OF REAR AXLE CARRIER WITH UPPER ARM

(See page [SA-38](#))

