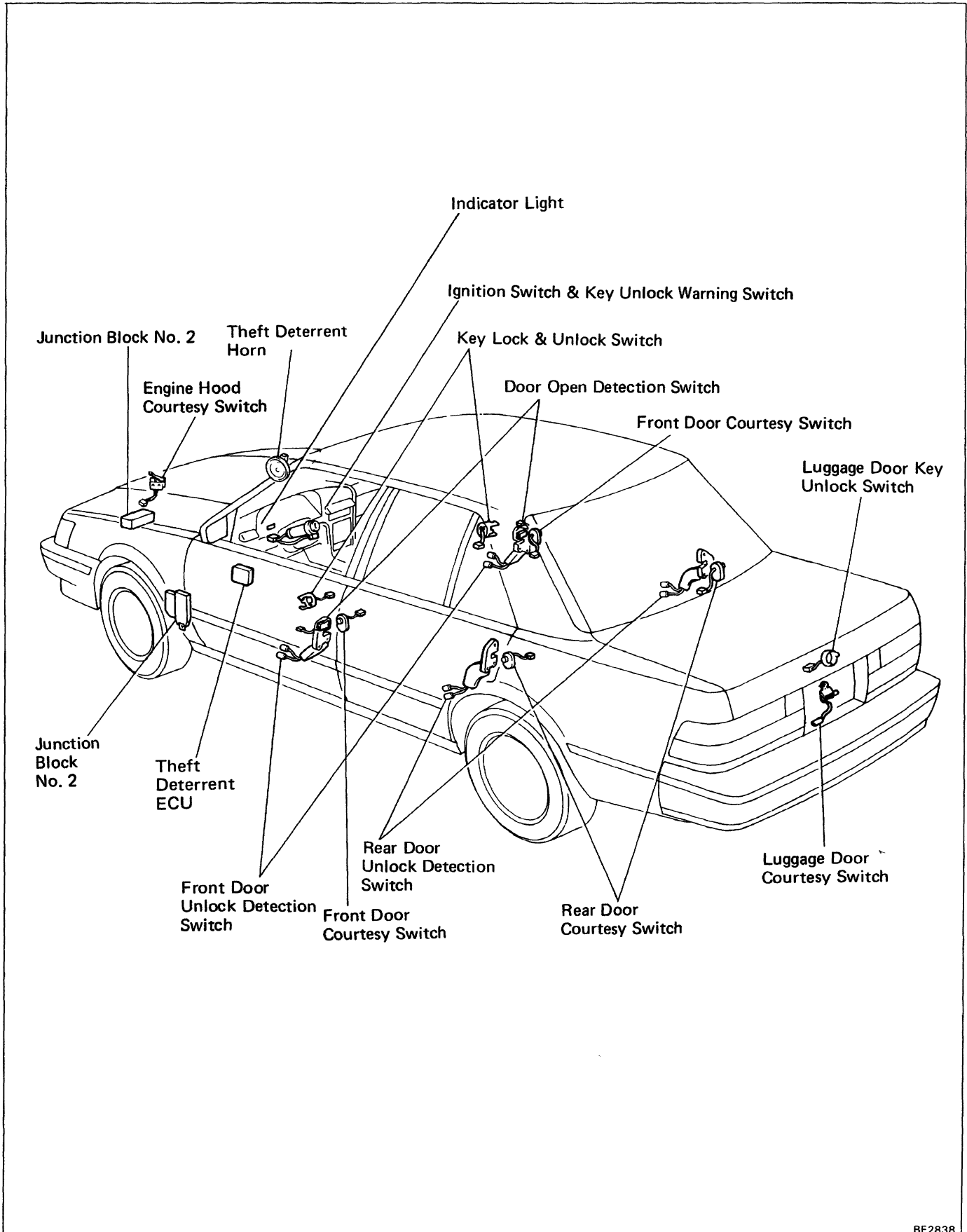
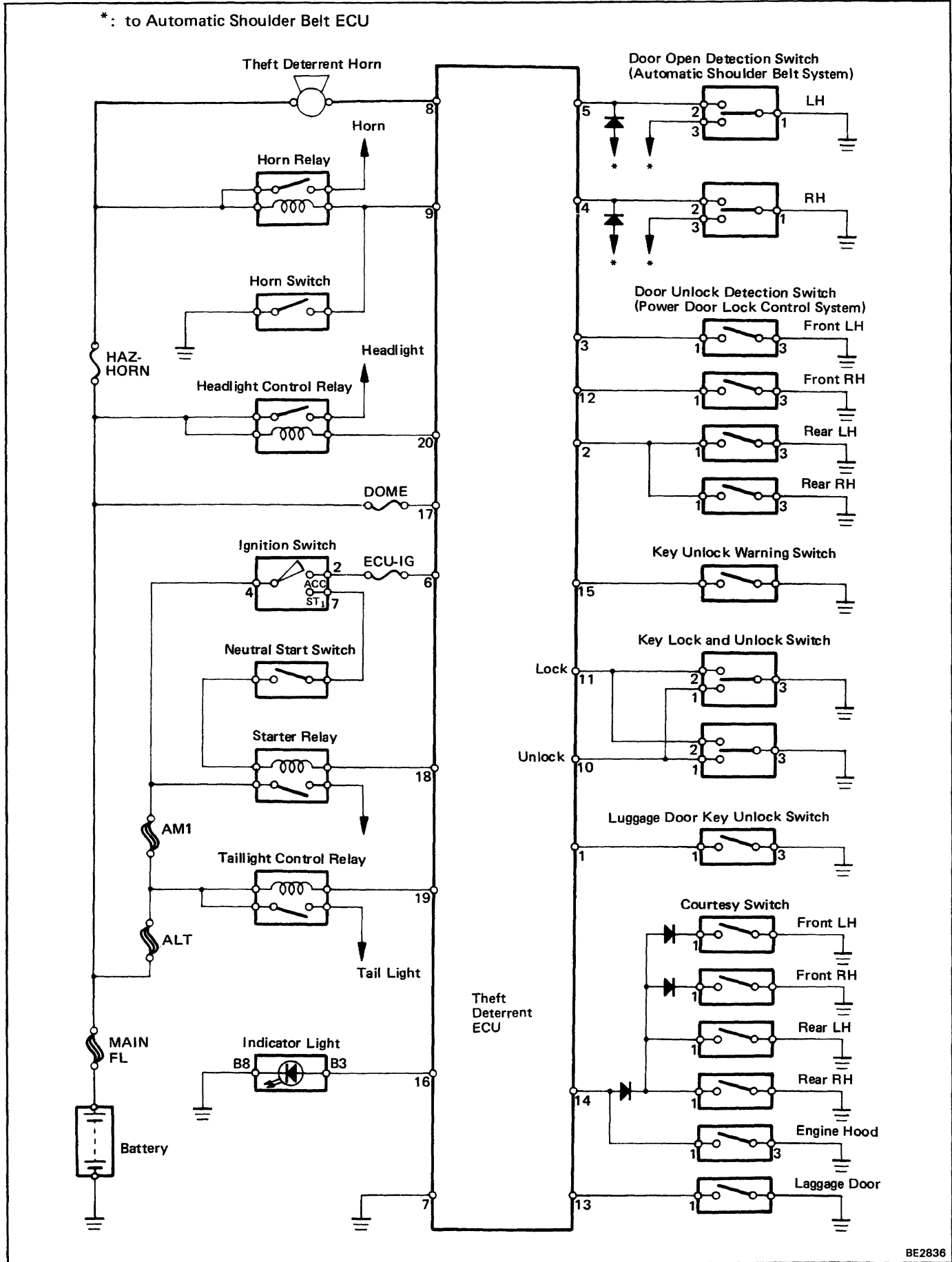


THEFT DETERRENT SYSTEM Parts Location

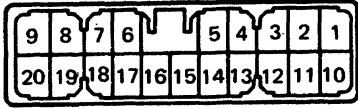


Wiring Diagram



Connector Diagrams

Theft Deterrent ECU



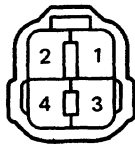
Door Key Lock and
Unlock Switch
(Front Door)



(Luggage Door)



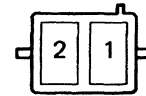
Door Unlock Detection Switch



Door Open Detection Switch

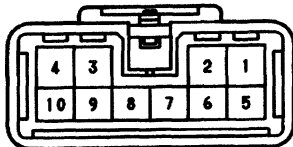


Theft Deterrent Horn

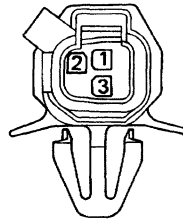


Door Courtesy Switch

Ignition Switch
• Key Unlock Warning Switch



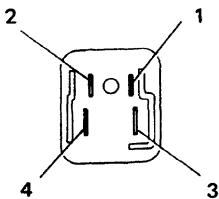
(Engine Hood)



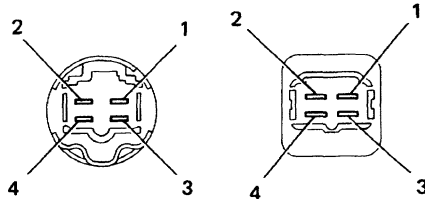
(Others)



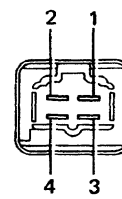
Headlight
Control
Relay



Taillight
Control
Relay



Starter
Relay

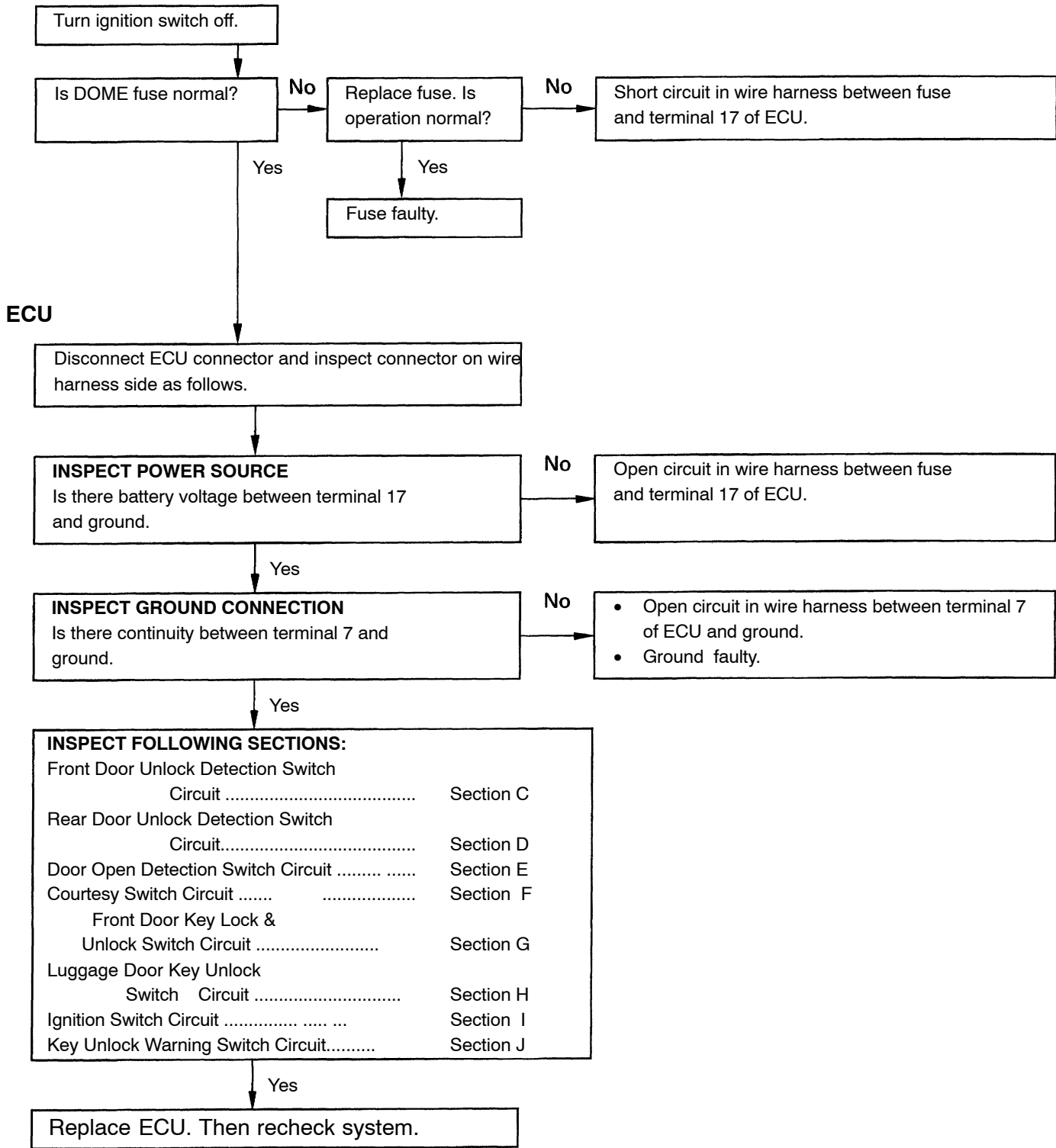


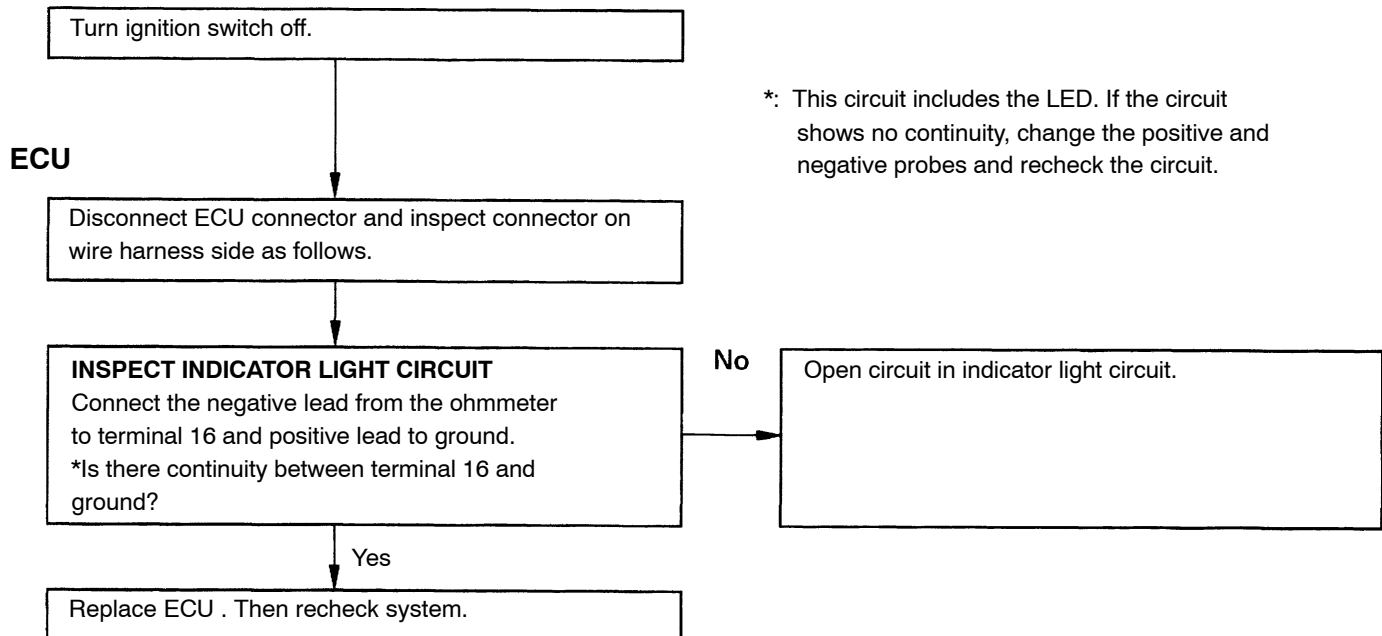
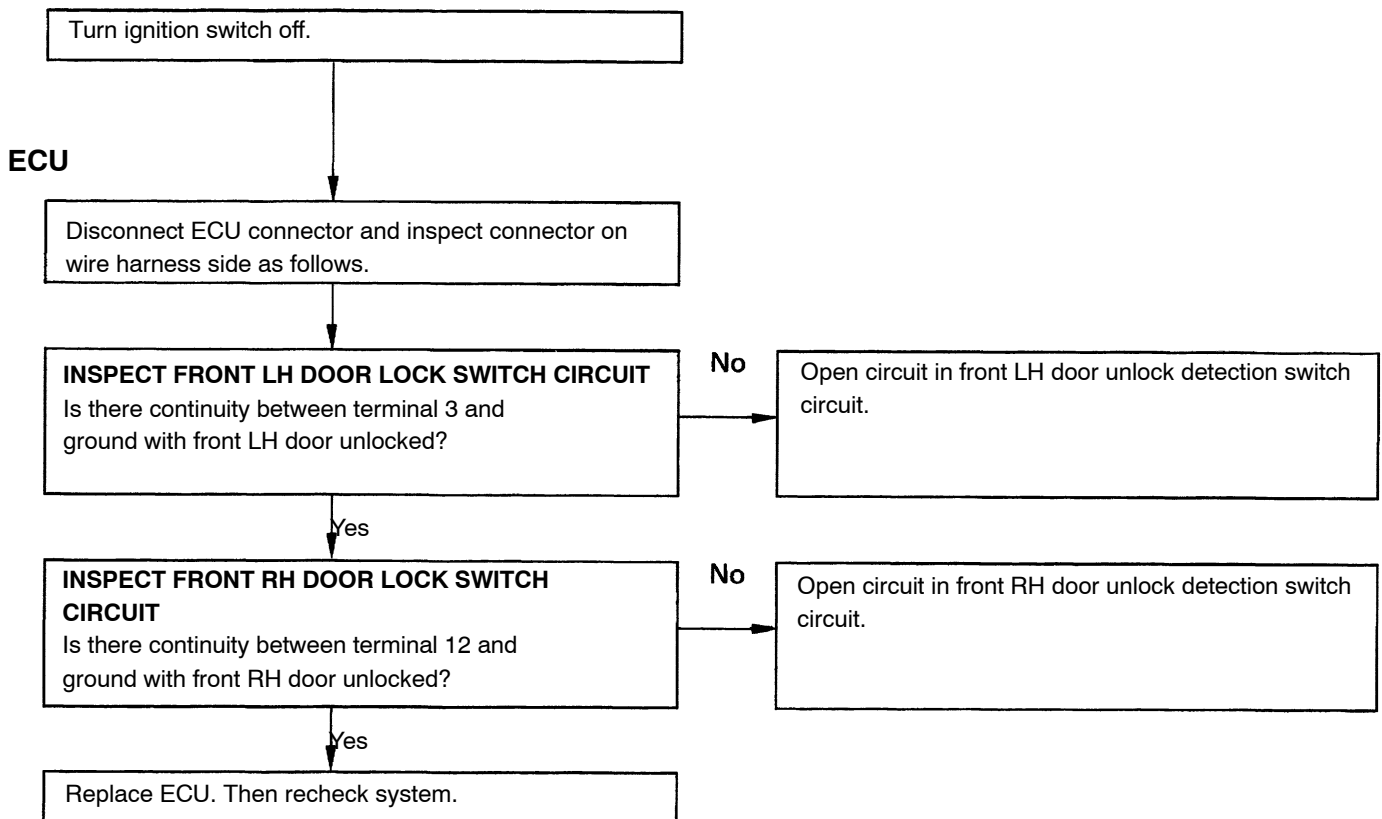
Troubleshooting

- Check that the operation of other systems (Power Door Lock control system and Automatic Shoulder Belt System etc.) are normal.
- When the system is not operating, lower the door glass and confirm under what conditions it does not operate, or malfunctions.

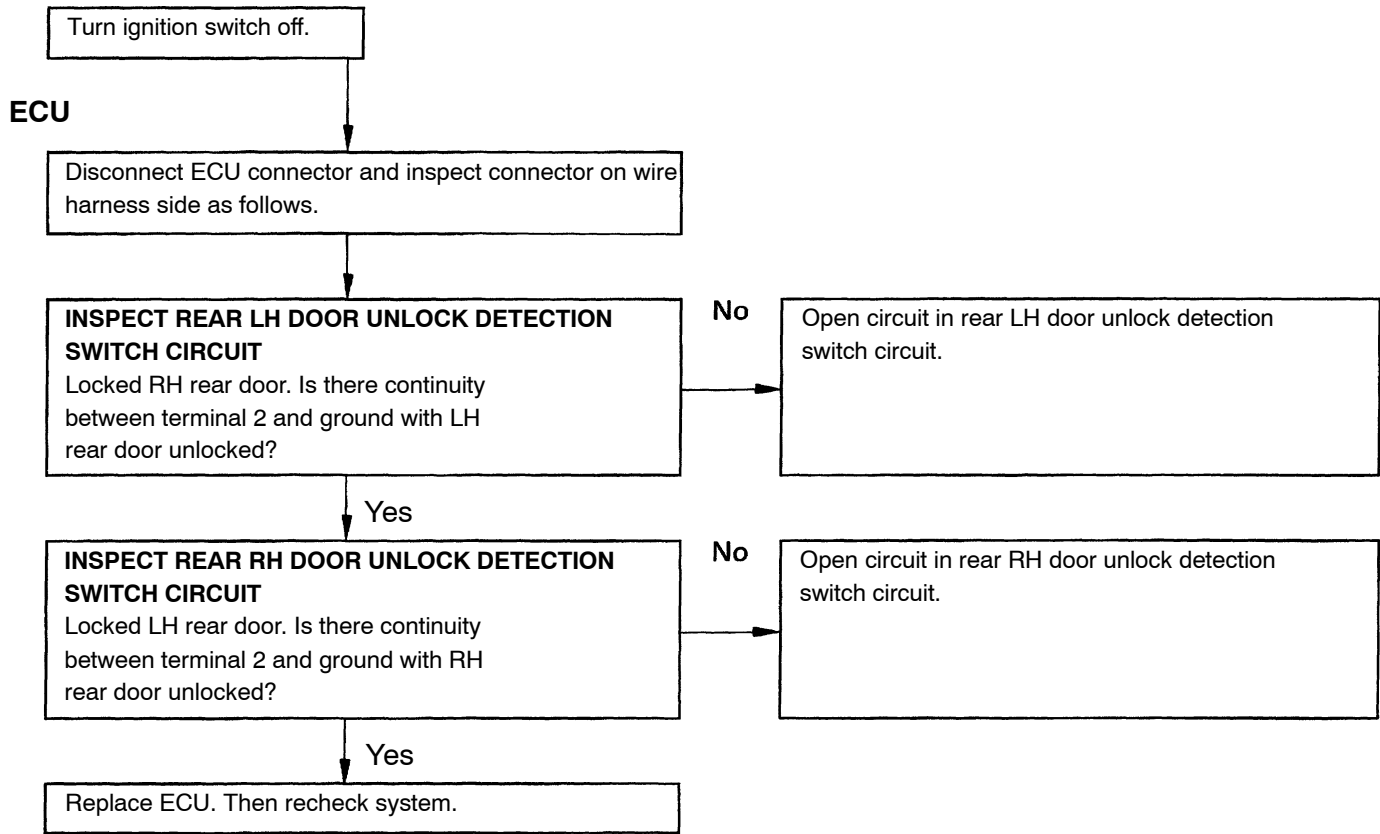
Problem	Inspection Item	Section
Theft deterrent system can not be set.	Power source circuit	A
Indicator light does not light even if theft deterrent system operated.	Indicator light circuit	B
Theft deterrent system does not operate when front doors opened.	Front unlock detection switch circuit Door open detection switch circuit Front door courtesy switch circuit	C
Theft deterrent system does not operate when rear doors opened.	Rear unlock detection switch circuit Rear door courtesy switch circuit	D
Theft deterrent system does not operate when luggage door opened.	Luggage door courtesy switch circuit	F
Theft deterrent system does not operate when engine hood opened.	Engine hood courtesy switch circuit	F
Theft deterrent system does not cancel when front door unlocked with key.	Front door key lock & unlock switch circuit	G
Theft deterrent system does not cancel when luggage door unlocked with key.	Luggage door key unlock switch circuit	H
Theft deterrent system does not cancel when ignition switch turned to ON or ACC position.	Ignition switch circuit Key unlock warning switch circuit	
Starter cut system does not operate even if theft deterrent system operated.	Key unlock warning switch circuit Starter cut system circuit.	
Starter cut system does not cancel even if theft deterrent system canceled.	Starter cut system circuit.	K
Horn does not blow even if theft deterrent system operated.	Theft deterrent horn circuit Standard equipment horns circuit	
Headlights do not flash even if theft deterrent system operated.	Headlight control relay circuit	M
Taillights do not flash even if theft deterrent system operated.	Taillight control relay circuit	N
Theft deterrent horn blows even if system is not set.	Theft deterrent horn circuit Standard equipment horns circuit	
Headlights flash even if system is not set.	Headlight control relay circuit	M
Taillights flash even if system is not set.	Taillight control relay circuit	N

A INSPECTION OF POWER SOURCE CIRCUIT

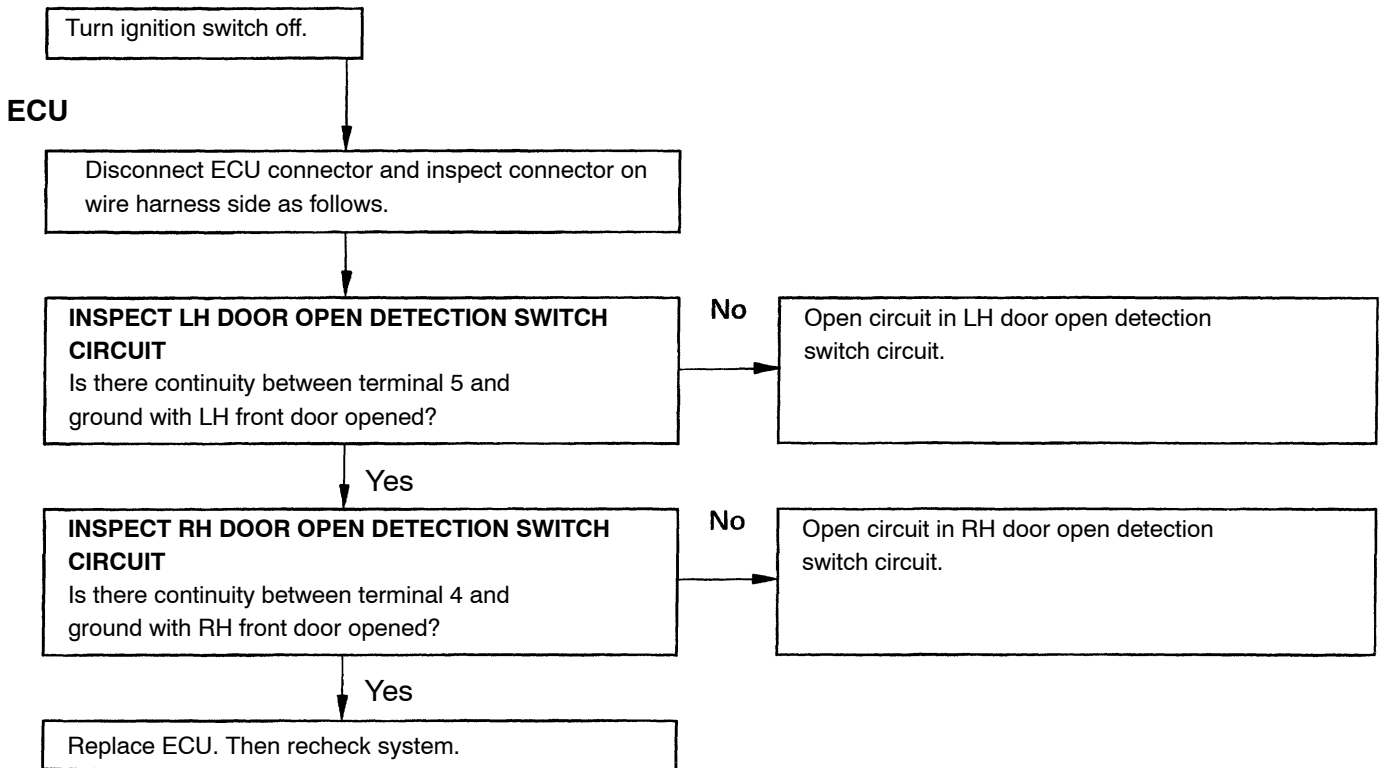


B INSPECTION OF INDICATOR LIGHT CIRCUIT**C INSPECTION OF FRONT DOOR UNLOCK DETECTION SWITCH CIRCUIT**

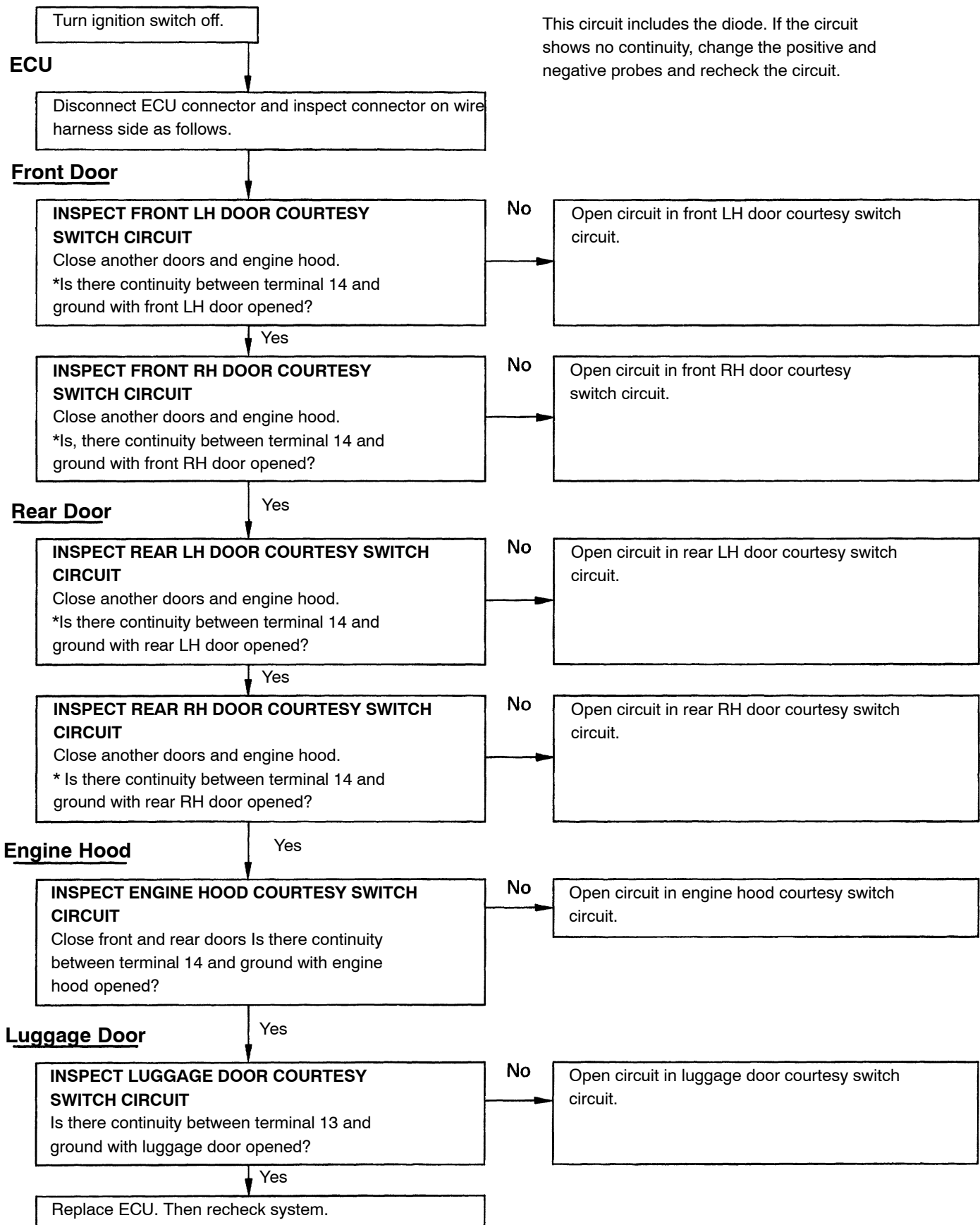
D INSPECTION OF REAR DOOR UNLOCK DETECTION SWITCH CIRCUIT



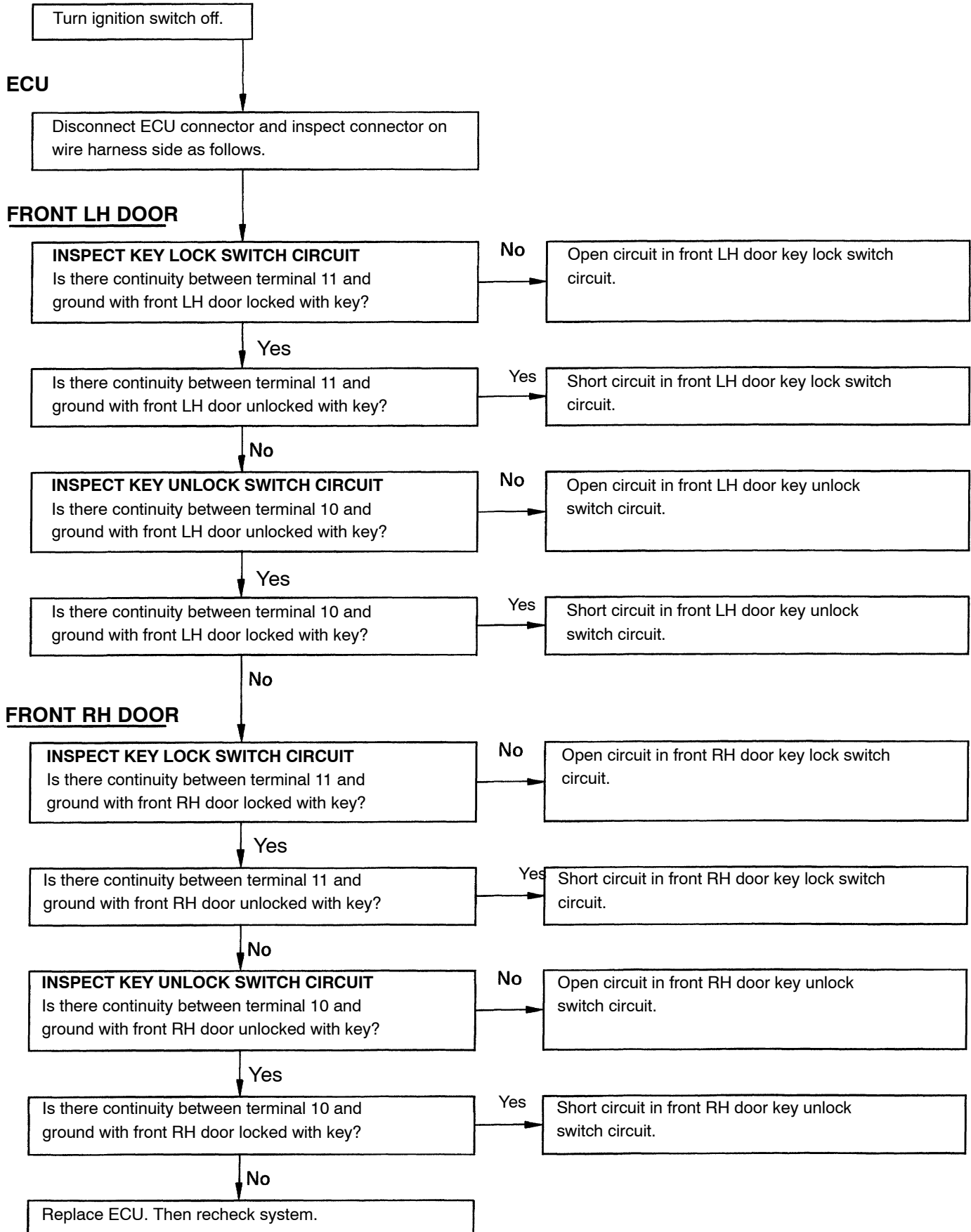
E INSPECTION OF DOOR OPEN DETECTION SWITCH CIRCUIT



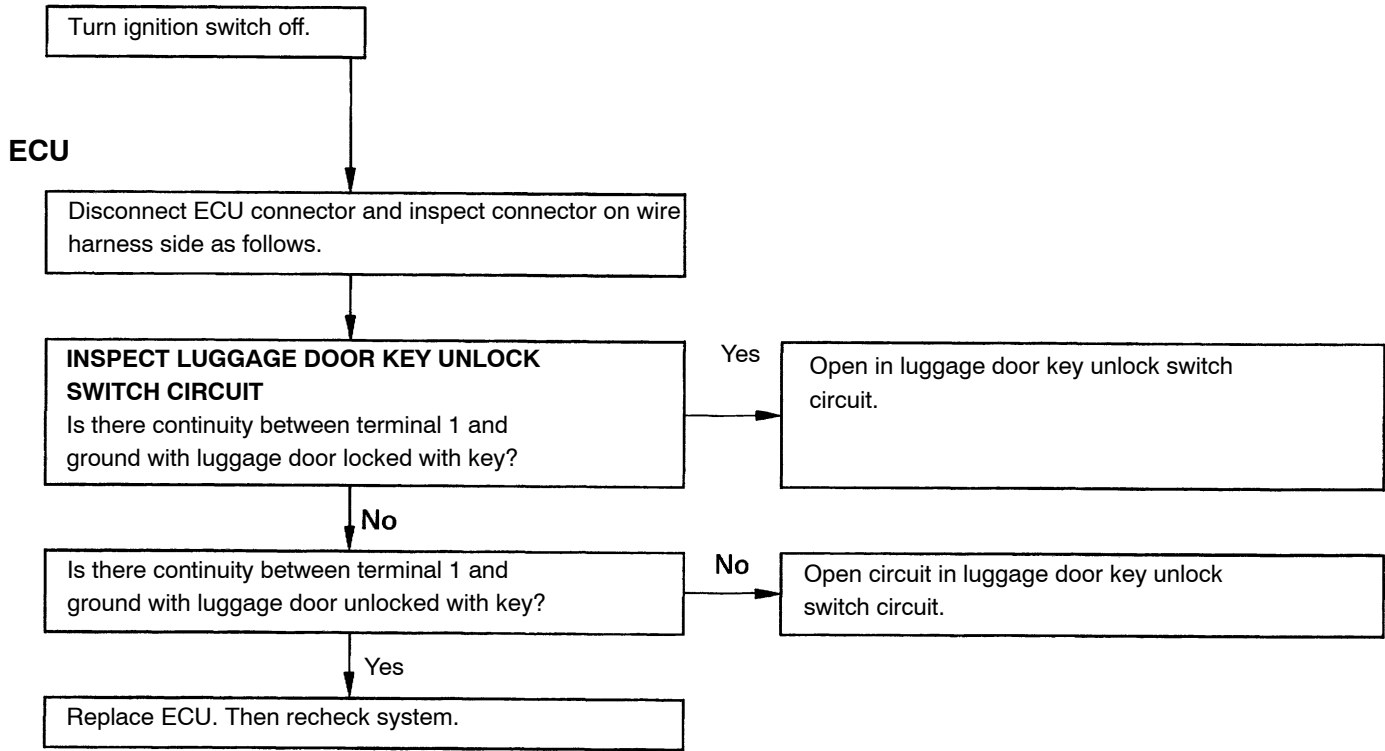
F INSPECTION OF COURTESY SWITCH CIRCUIT



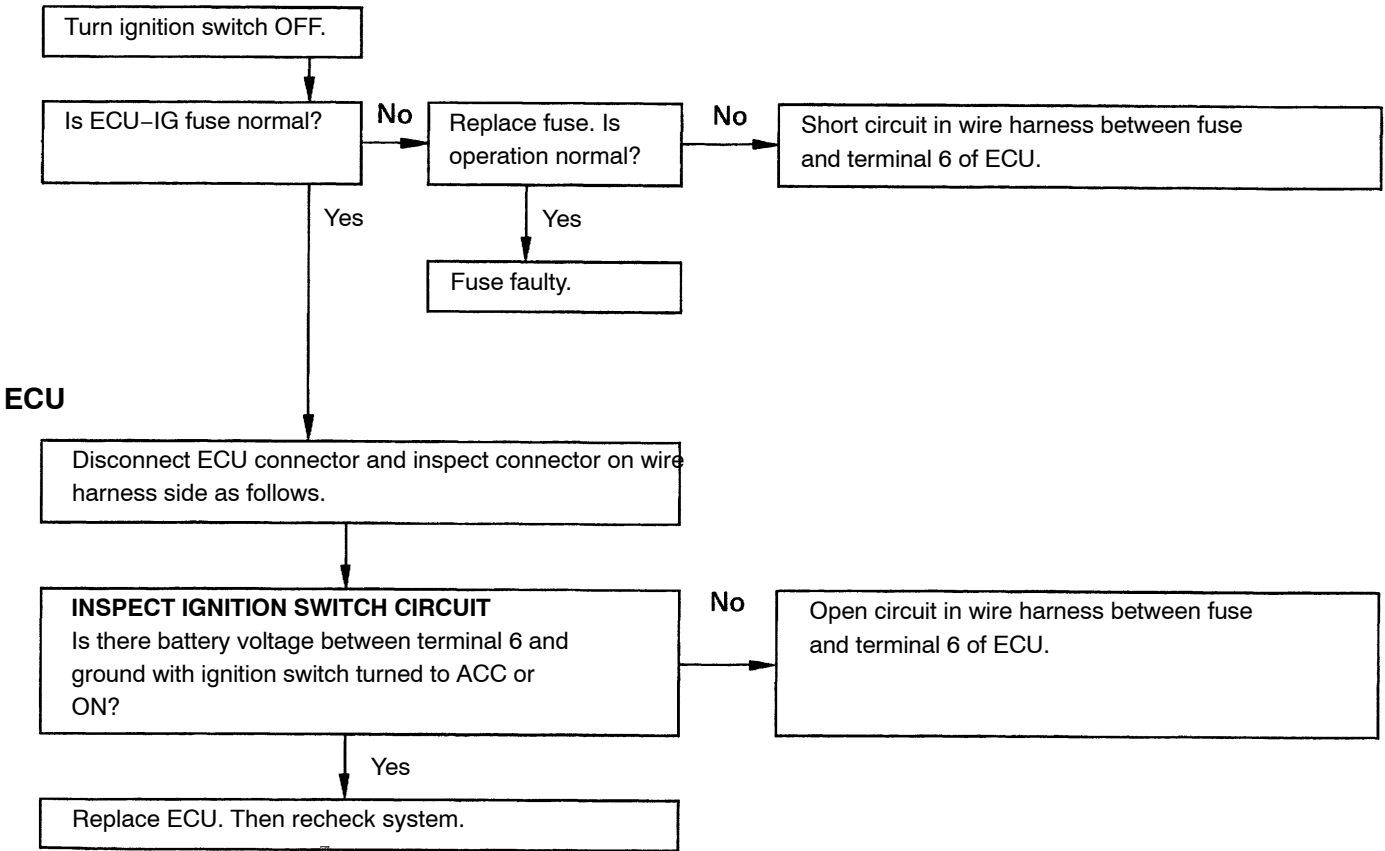
G INSPECTION OF FRONT DOOR KEY LOCK & UNLOCK SWITCH CIRCUIT



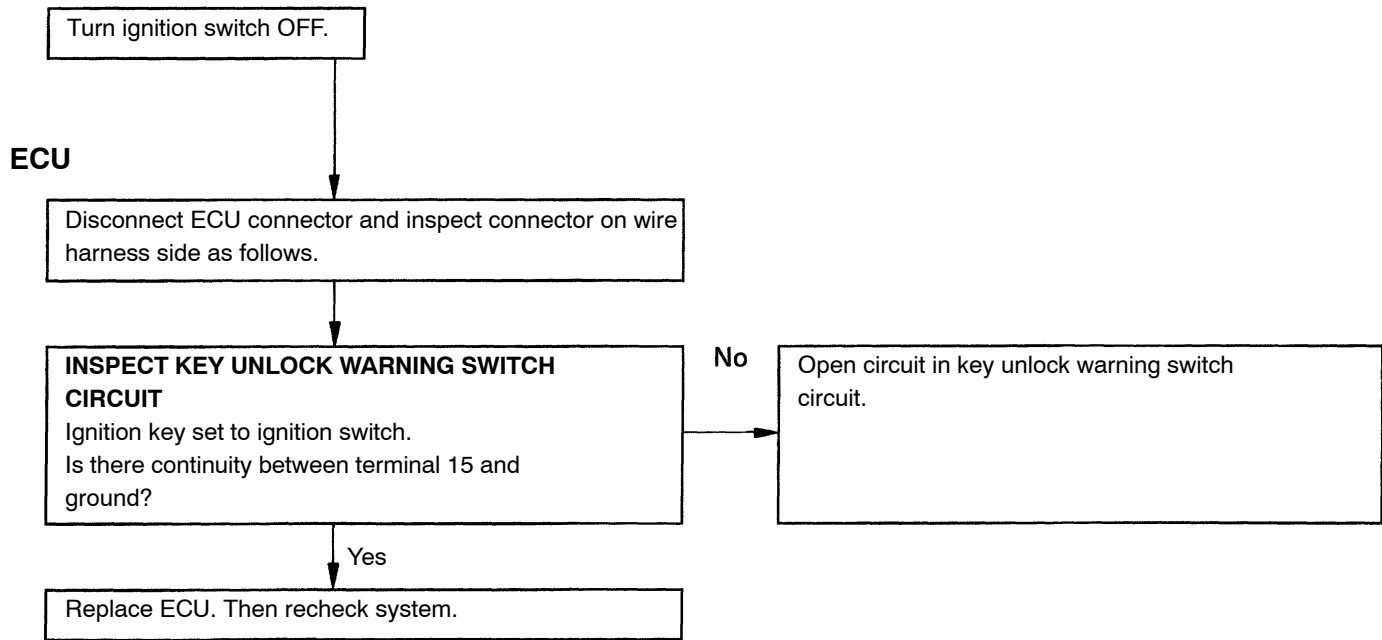
H INSPECTION OF LUGGAGE DOOR KEY UNLOCK SWITCH CIRCUIT



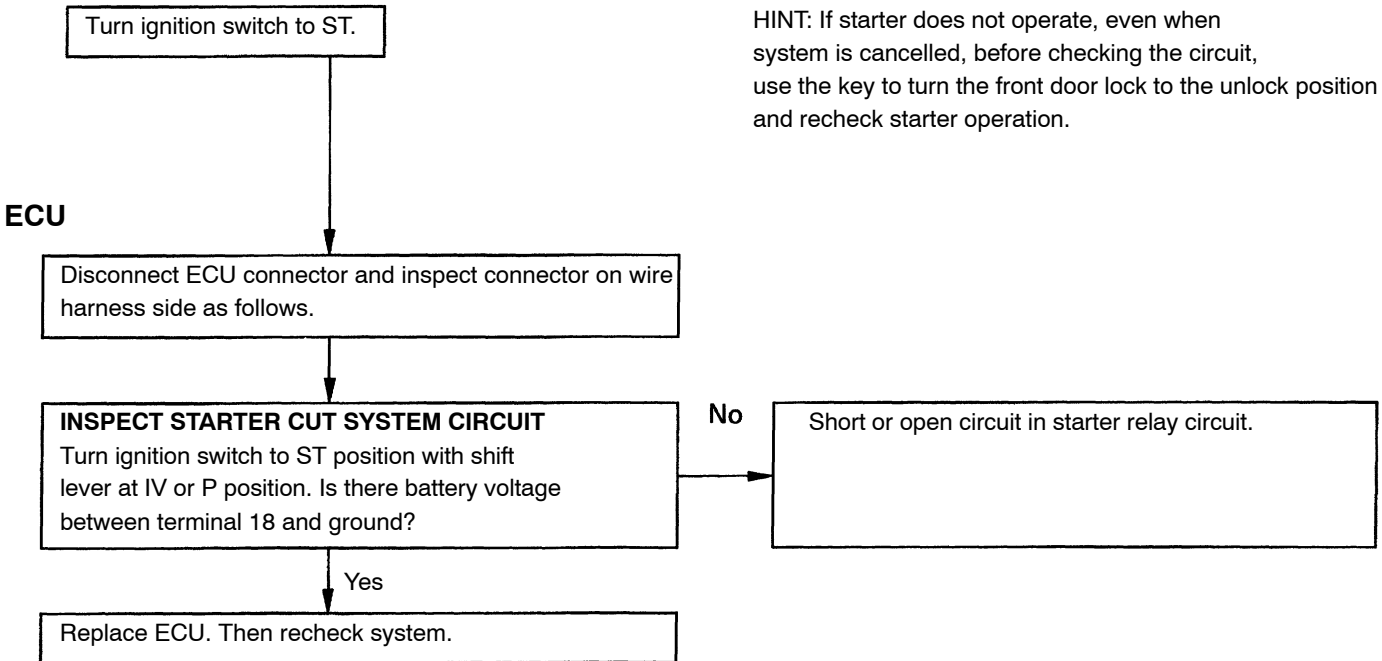
I INSPECTION OF IGNITION SWITCH CIRCUIT



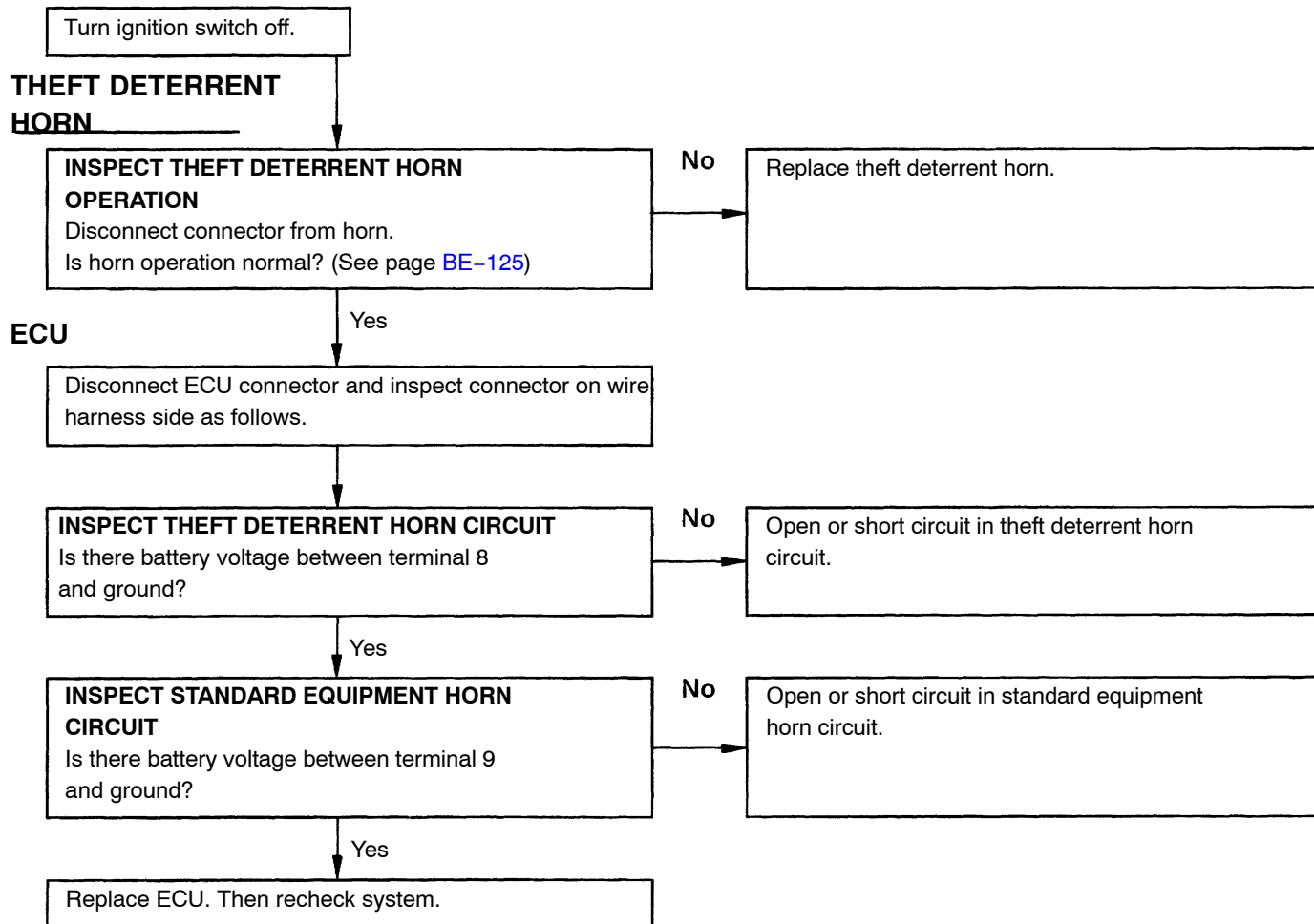
J INSPECTION OF KEY UNLOCK WARNING SWITCH CIRCUIT



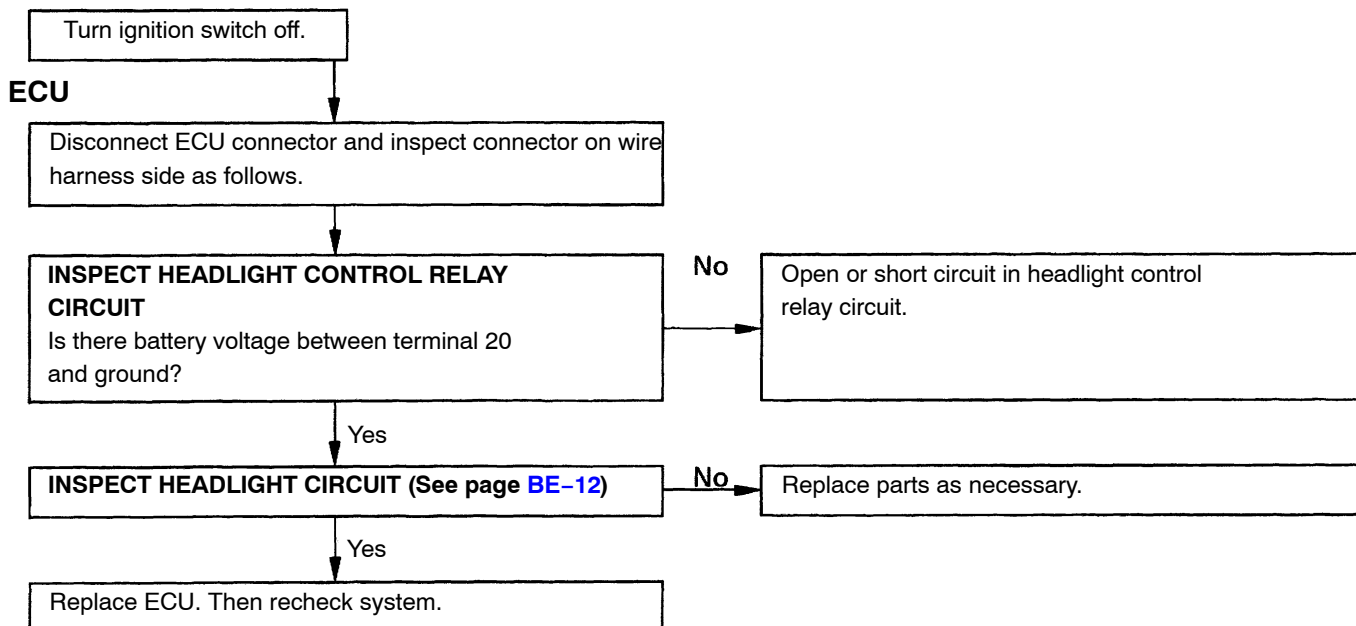
K INSPECTION OF STARTER CUT SYSTEM CIRCUIT



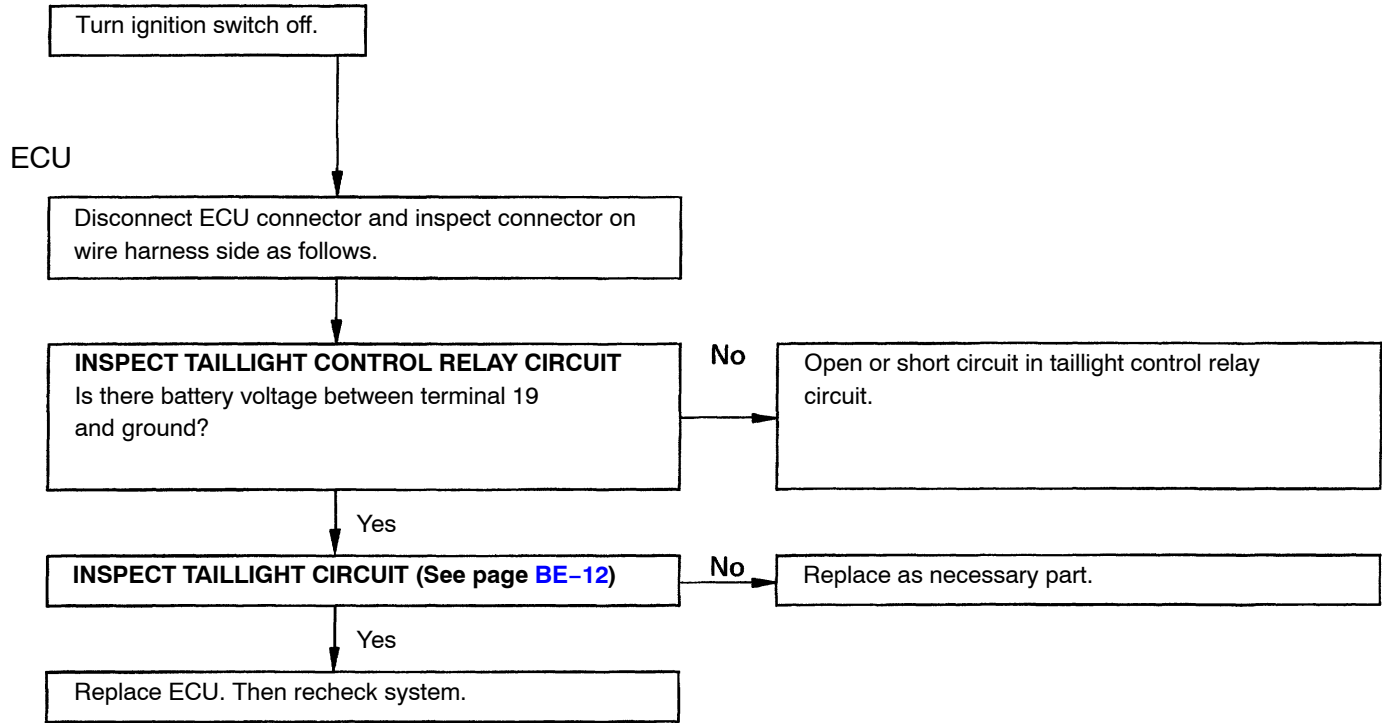
L INSPECTION OF THEFT DETERRENT HORN CIRCUIT



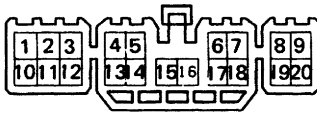
M INSPECTION OF HEADLIGHT CONTROL RELAY CIRCUIT



N INSPECTION OF TAILLIGHT CONTROL RELAY CIRCUIT



Wire Harness Side



S-20-1

Parts Inspection

1. INSPECT THEFT DETERRENT ECU CIRCUIT

Disconnect the ECU and inspect the connector on the wire harness side as shown in the chart below.

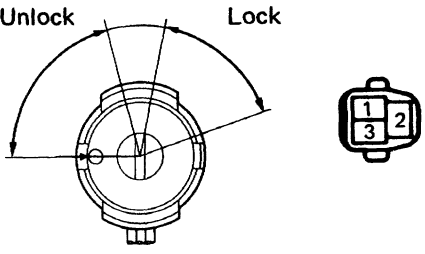
Check for	Tester connection	Condition	Specified value
Continuity	1 - Ground	Luggage door unlocked with key	Continuity
		Other positions	No continuity
	2 - Ground	Rear LH or RH door lock lever unlocked	Continuity
		Rear LH or RH door lock lever locked	No continuity
	3 - Ground	Front LH door lock lever unlocked	Continuity
		Front LH door lock lever locked	No continuity
	4 - Ground	RH front door opened	Continuity
		RH front door closed	No continuity
	5 - Ground	LH front door opened	Continuity
		LH front door closed	No continuity
Voltage	^ - Ground	Turn ignition switch to ACC or ON	Battery Voltage
Continuity	7 - Ground	Constant	Continuity
Voltage	8 - Ground	Constant	Battery Voltage
	9 - Ground	Constant	Battery Voltage
Continuity	10 - Ground	LH or RH front door unlocked with key	Continuity
		Other positions	No continuity
	11 - Ground	LH or RH front door locked with key	Continuity
		Other positions	No continuity
	12 - Ground	Front RH door lock lever unlocked	Continuity
		Front RH door lock lever locked	No continuity
	13 - Ground	Luggage door opened	Continuity
		Luggage door closed	No continuity
	* 14 - Ground	Front door or rear door or engine hood opened	Continuity
		Front door and rear door and engine hood closed	No continuity
	15 - Ground	Ignition key set to ignition switch	Continuity
		Ignition key removed from ignition switch	No continuity
	* 16 - Ground	Constant	Continuity
	Voltage	17 - Ground	Constant
18 - Ground		Turn ignition switch to ST with shift lever at P or N position	Battery Voltage
19 - Ground		Constant	Battery Voltage
20 - Ground		Constant	Battery Voltage

*: This circuit includes the LED or diode. If the circuit shows no continuity, change the positive and negative probes and recheck the circuit.

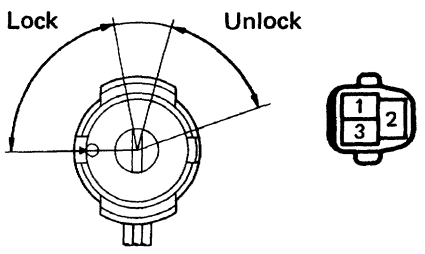
If circuit is correct, replace the theft deterrent ECU.

2. INSPECT SWITCHES

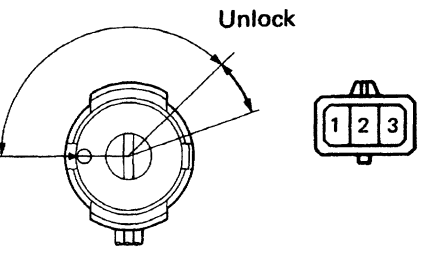
(Front Door LH Key Lock & Unlock Switch/ Continuity)

 <p>BE2827 IU-3-1</p>	Terminal	1	2	3
	Condition			
	Lock		○—○	
	Unlock	○—○		○—○

(Front Door RH Key Lock & Unlock Switch/ Continuity)

 <p>BE2828 IU-3-1</p>	Terminal	1	2	3
	Condition			
	Lock		○—○	
	Unlock	○—○		○—○

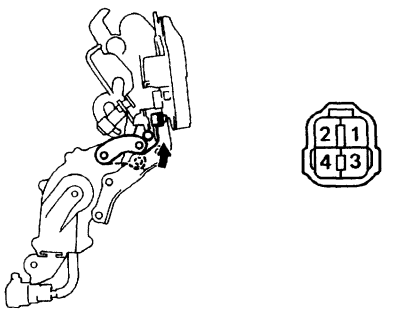
(Luggage Door Key Unlock Switch/ Continuity)

 <p>BE2858 U-3-1</p>	Terminal	1	2	3
	Condition			
	Lock			
	Unlock	○—○		○—○

(Front Door Unlock Detection Switch/ Continuity)

See step 2 of Power Door Lock Control System on page [BE-62](#).

(Rear Door Unlock Detection Switch/ Continuity)

 <p>BE2601 IS-4-28</p>	Terminal	1	2	3
	Condition			
	OFF (Door lock lever set to LOCK)			
ON (Door lock lever set to UNLOCK)	○—○		○—○	

(Door Open Detection Switch)

See step 2 of Automatic Shoulder Belt System on page [BE-83](#).

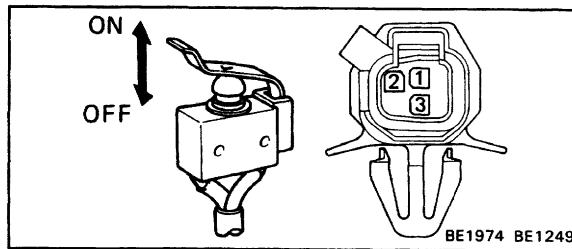
(Ignition Switch)

See Ignition System on page [BE-9](#).

(Key Unlock Warning Switch)

See step 1 of Key Confine Prevention System on page [BE-10](#).

(Engine Hood Courtesy Switch)



Terminal	1	2	3
Condition			
OFF (Closed)			
ON (Opened)	○	—	○

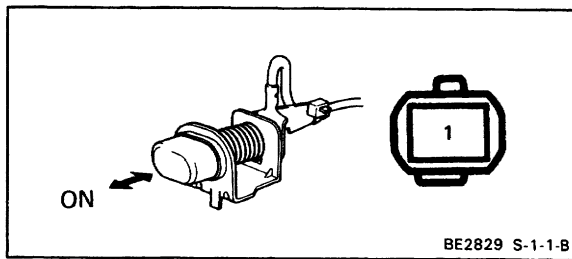
(Front Door Courtesy Switch)

See step 2 of Open Door Warning System on page [BE-45](#).

(Rear Door Courtesy Switch)

See step 2 of Open Door Warning System on page [BE-45](#).

(Luggage Door Courtesy Switch)



Terminal	1	Switch Body
Condition		
OFF (Closed)		
ON (Opened)	○	—

If operation is not as specified, replace the switch.

3. INSPECT RELAY

(Headlight Control Relay)

See step 2 on page [BE-22](#).

(Taillight Control Relay)

See step 2 on page [BE-22](#).

(Starter Relay)

See page [ST-12](#).

(Horn Relay)

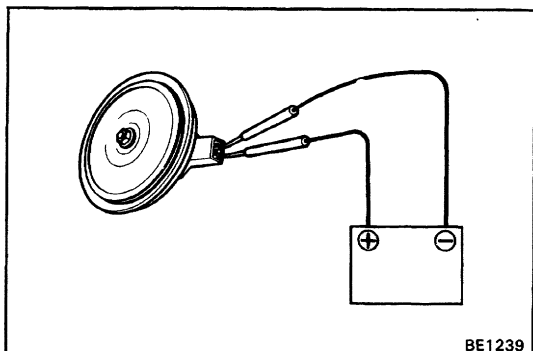
See Taillight Control Relay on page [BE-22](#).

4. INSPECT THEFT DETERRENT HORN

(Operation)

- (a) Connect the positive (+) lead from the battery to terminal 1 and the negative (-) lead to terminal 2.
- (b) Check that the horn blows.

If operation is not as specified, replace the horn.



BE1239