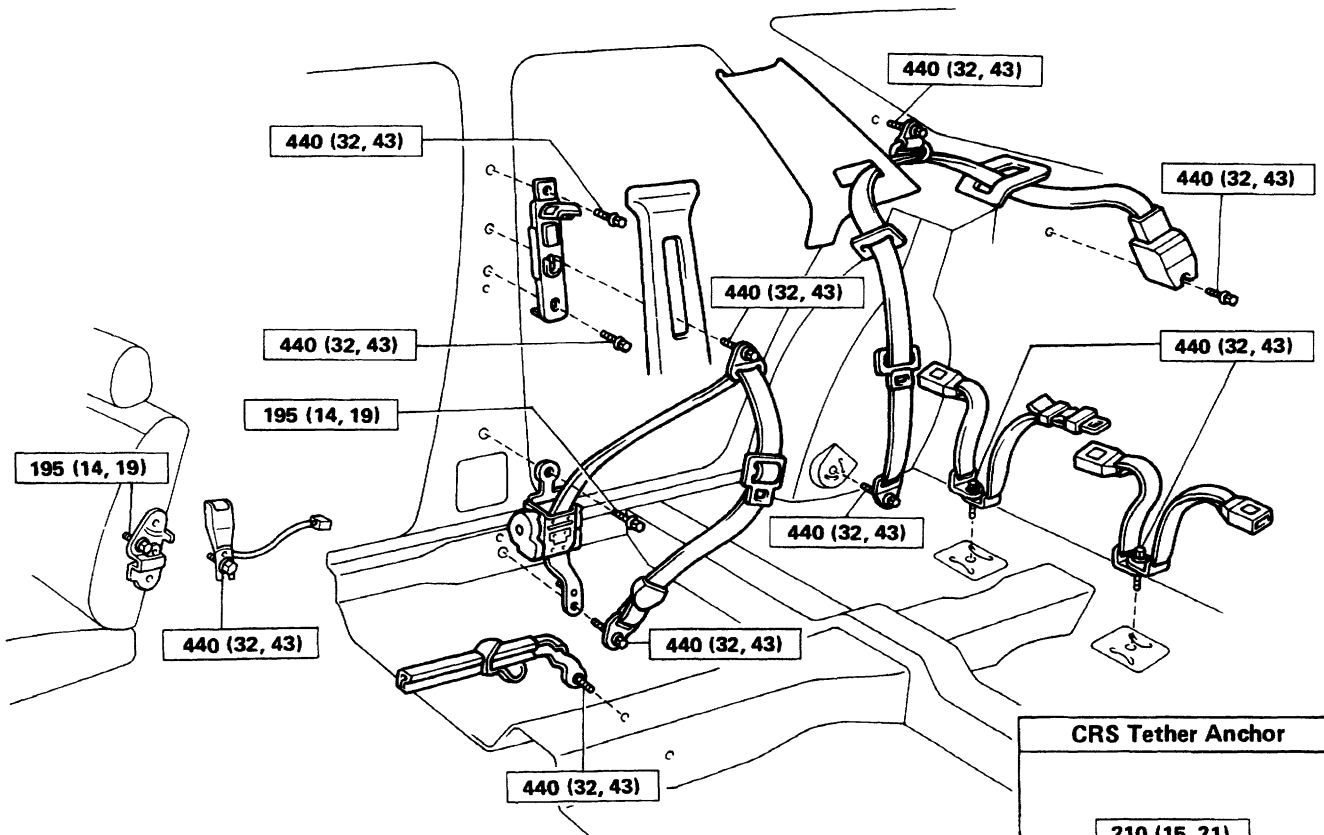


# SEAT BELTS COMPONENTS

## Three-point Type Seat Belt

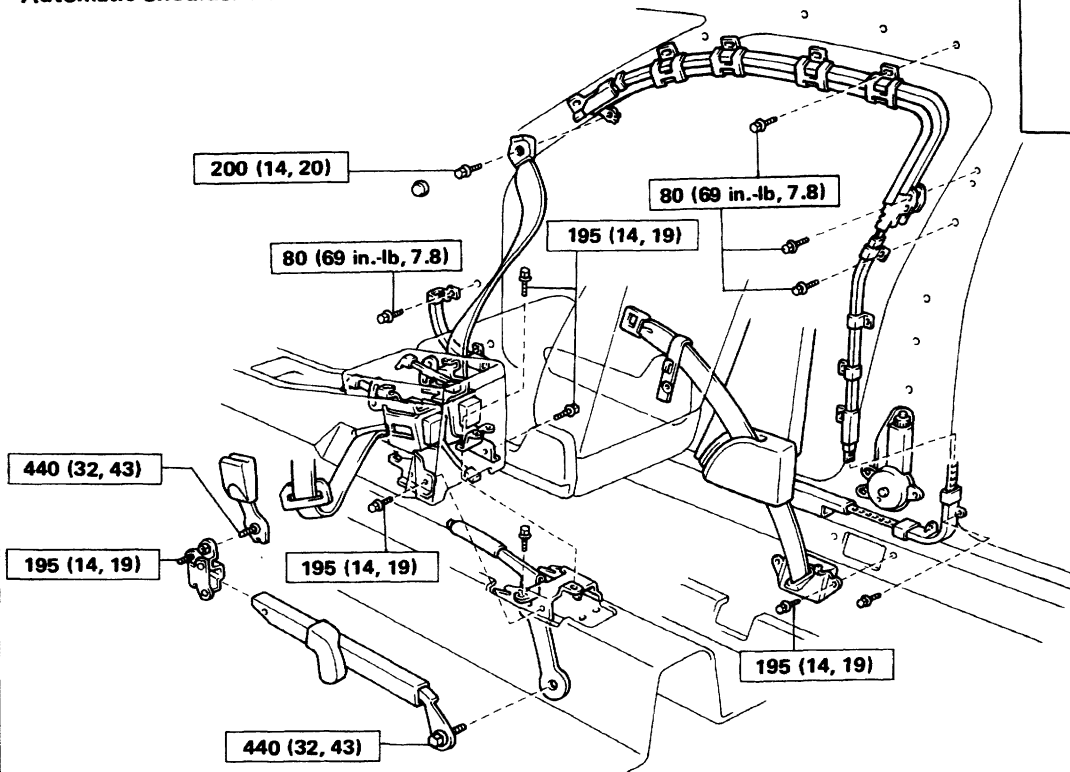


### CRS Tether Anchor

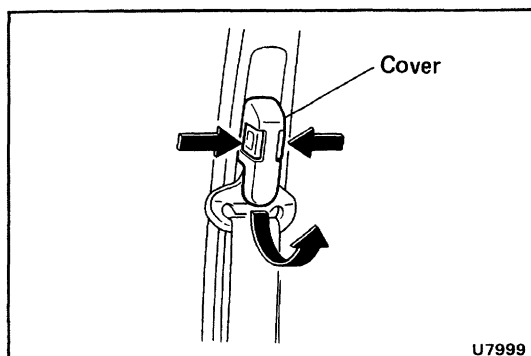
210 (15, 21)



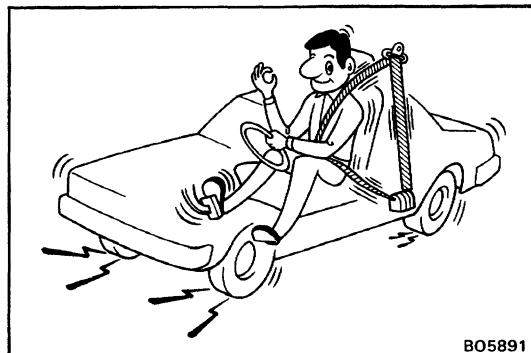
## Automatic Shoulder Belt



kg-cm (ft-lb, N-m) : Specified torque



HINT: To remove the cover of the anchor belt for the front shoulder belt adjuster, press the button on both sides of the cover while pulling the lower end of the cover down slightly then outwards.



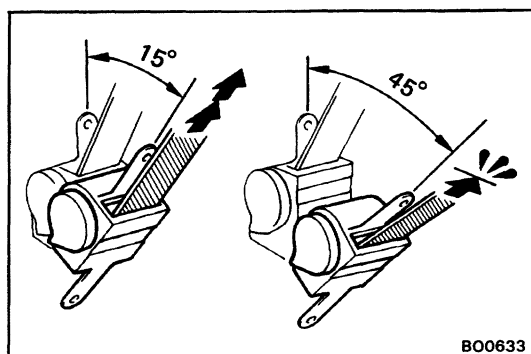
## OUTBOARD SEAT BELT

[Emergency Locking Retractor (ELR) Type]

### 1. RUNNING TEST (IN SAFE AREA)

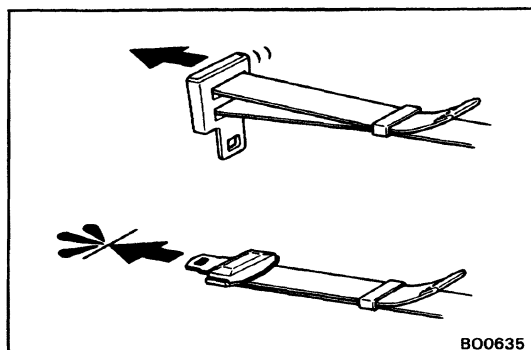
- Fasten the front seat belt.
- Drive the car at 10 mph (16 km/h) and make a very hard stop.
- Check that the belt is locked and cannot be extended at this time.

HINT: Conduct this test in a safe area. If the belt does not lock, remove the belt mechanism assembly and conduct the following static check. Also, whenever installing a new belt assembly, verify the proper operation before installation.



### 2. STATIC TEST

- Remove the locking retractor assembly.
  - Tilt the retractor slowly.
  - Verify that the belt can be pulled out at a tilt of 15 degrees or less, and cannot be pulled out at over 45 degrees of tilt.
- If a problem is found, replace the assembly.



## REAR CENTER SEAT BELT

(Manual Type)

### TESTING

- Adjust the belt to the proper length.
- Apply a firm load to the belt.
- Verify that the belt does not extend.