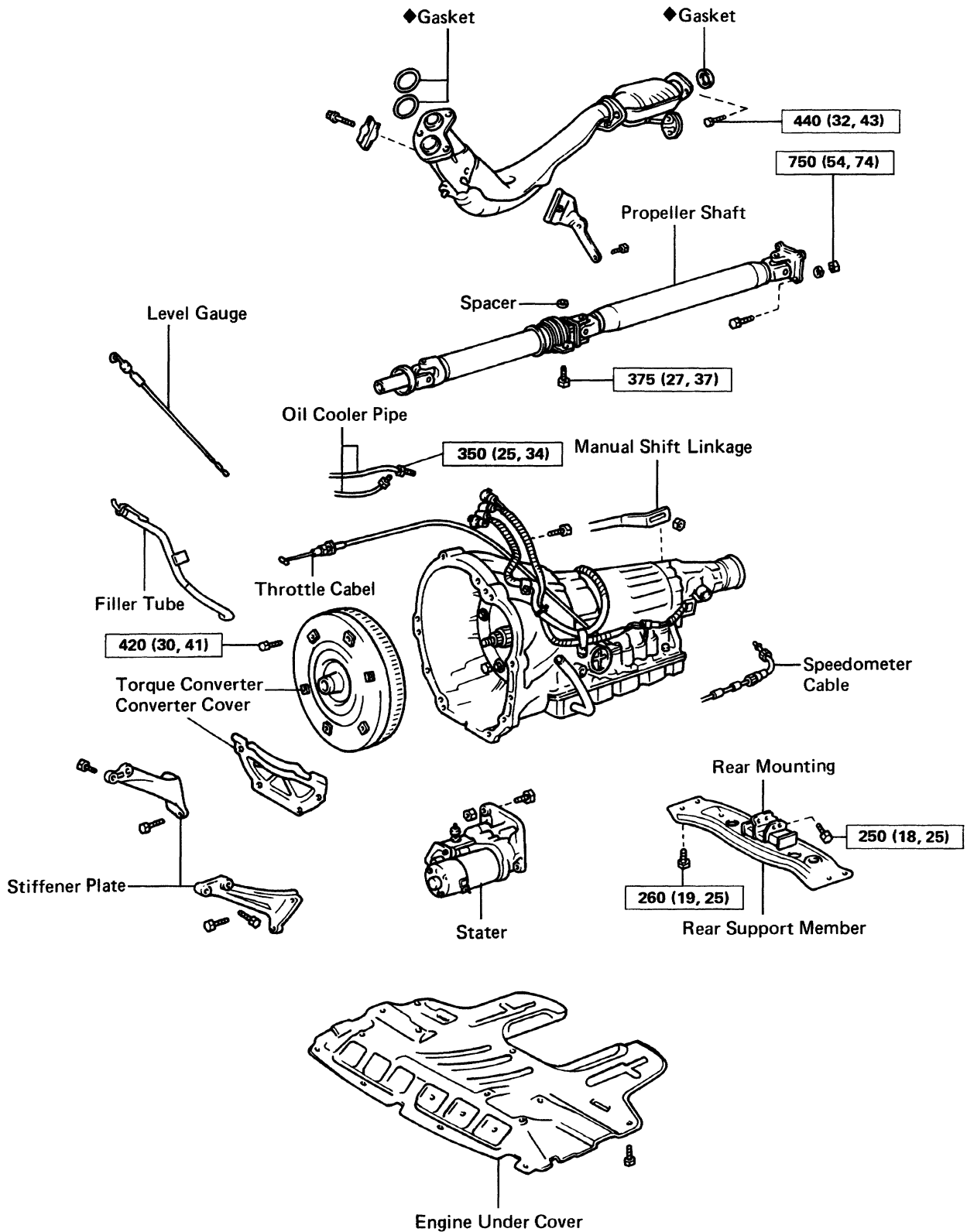


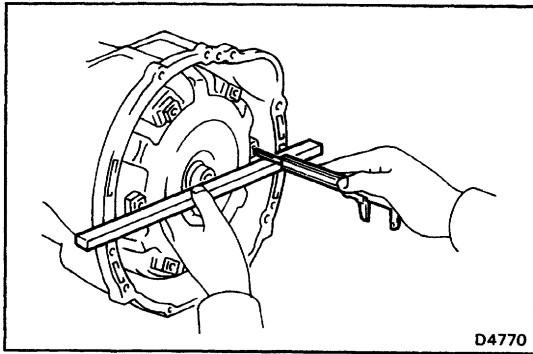
REMOVAL AND INSTALLATION OF TRANSMISSION

Remove and install the parts as shown.



kg-cm (ft-lb, N·m) : Specified torque

◆ Non-reusable part



(MAIN POINT OF REMOVAL AND INSTALLATION)

1. DISCONNECT THROTTLE CABLE CONNECTIONS IN THE ENGINE COMPARTMENT BEFORE REMOVAL

2. CHECK TORQUE CONVERTER INSTALLATION

Using calipers and a straight edge, measure from the installed surface of the torque converter to the front surface of the transmission housing.

Correct distance: 26.4 mm (1.039 in.)

If the distance is less than the standard, check for an improper installation.

3. ADJUST TRANSMISSION THROTTLE CABLE

(See page [AT-20](#))

4. FILL TRANSMISSION WITH ATF AND CHECK FLUID LEVEL

Fluid type: ATF DEXRON® II

Capacity:

Total: 7.2 liters (7.6 US qts, 6.3 Imp. qts)

Drain and refill: 1.6 liters (1.7 US qts, 1.4 Imp. qts)

NOTICE: Do not overfill.

5. IF THROTTLE CABLE IS NEW, STAKE STOPPER ON INNER CABLE

(a) Pull in the slack of the inner cable.

(b) Stake the stopper as shown 0 – 1 mm (0 – 0.04 in.) in width.

